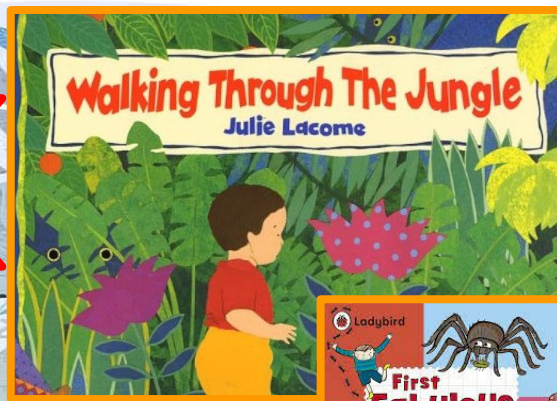
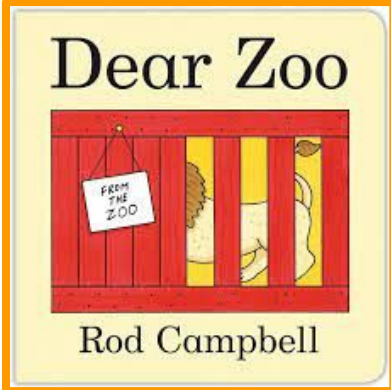
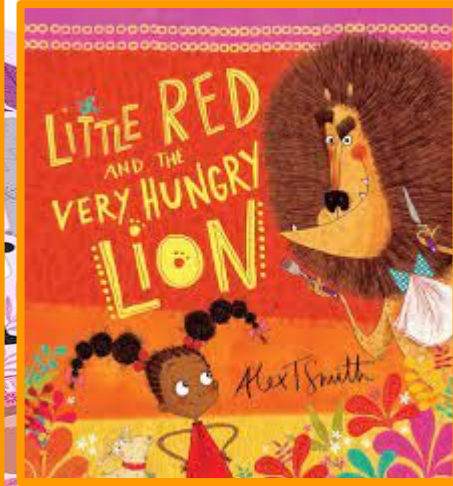
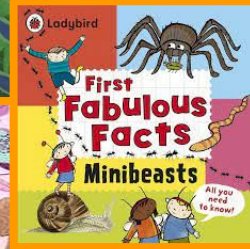


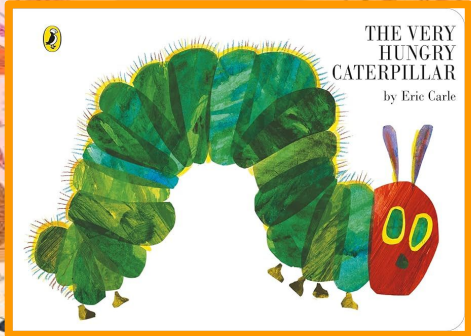
**Year R
Term 5**



Animal Safari



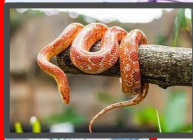
This project teaches children about the animals that live around the world, how to look after animals and the importance of caring for our local and global environments. We will also be learning about invertebrates that live in their gardens and local environment.



It is important to note that in EYFS at Westlands Primary we teach to the children's interest so this plan may change. We offer a play based curriculum where children are encouraged to use the inside and outside learning environment on a daily basis, whatever the weather. We encourage our children to become independent learners in a safe and stimulating environment where staff plan activities around a different theme each term.

Year R
Term 5

Animal Safari!



Personal Social and Emotional Development

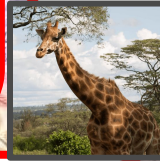
We will be looking at how to be a good friend and how to solve problems with our friends in our weekly jigsaw PSHE sessions. The children will have the opportunity to share their thoughts and feelings related to the books we read and the experiences we share. The children will be continuing to develop their understanding of the zones of regulations by discussing the characters in our focus texts feelings and linking them to their own feelings. We will be finding out how to look after different animals and how it is important to look after the world around us.

Understanding of the world

We will be finding out lots of new facts about a range of different animals and minibeast. We will be exploring different animal life cycles as well as the names for animals and their young. We will learn about why it is important to care for the environment we live in and how we can look after the plants and animals which live there. We will learning about what different animals like to eat and comparing it to our own diets- are we herbivores, carnivores or omnivores? We will develop our understanding of different places around the world and find out what sort of habit an elephant would live in.

Expressive Art and Design

The children will have access to a range of creative resources to make their mark and create their own masterpiece! The children will be creating a self-portrait sculpture in our art focus using paper mache and paint. We will be exploring patterns and textures when looking at different animals skin and fur. The children will have access to junk modeling materials to create large scale models of animals and minibeast. We will have weekly enhancements linked to the texts for children to role-play, retell and recreate stories. We will have a zoo shop and cafe in the roleplay area as well as weekly small worlds linked to the focused text.



Physical Development

We will be moving like animals to music; how would an elephant stomp through the jungle? How would a snake slither across the grass? We will be creating an animal parade after listening to *The Carnival of the Animals* by Camille Saint-Saëns. We will be working on our coordination and the children will have access to a range of equipment to support this such as a range of size balls to throw and catch and different apparatus to create their own obstacle course. The children will have access to large construction and junk modelling resources daily.



It is important to note that in EYFS at Westlands Primary we teach to the children's interest so this plan may change. We offer a play based curriculum where children are encouraged to use the inside and outside learning environment on a daily basis, whatever the weather. We encourage our children to become independent learners in a safe and stimulating environment where staff plan activities around a different theme each term.

Year R
Term 5

Animal Safari!



Useful Websites

<https://www.phonicsplay.co.uk/>
www.topmarks.co.uk
www.getepic.com
Numberblocks

Mathematics

We will be continuing to develop our understanding of number and will be focusing on numbers to 20. The children will be finding 1 more and adding together 2 numbers. We will be creating first, then and now mathematical stories to find out how many. We will develop our understanding of taking away. We will be continuing to explore 2d and 3d shapes. We will be developing our knowledge on the properties of shapes as well as spatial relations.



Communication and Language

We will be remembering and sharing our experiences of the trip to Wingham; talking about our favourite part of the day as well as any new facts we found out about the animals. The children will be encouraged to join in with repeated phrases in the texts we read. We will be sharing stories in our weekly storytelling sessions where the children will be working together to create a character, setting, problem and solution. We will roleplay and retell Little Red and the Hungry Lion discussing how the characters will be feeling throughout the story.

Literacy

We will continue with our daily phonics and reading sessions. The children will have the opportunity to apply their knowledge though the day; writing simple sentences, reading words related to our focus texts as well as adding labels to our creations.

In the reading areas, a selection of fiction and non-fiction topic based books will be available for the children to access and inform their discussions sharing new vocabulary with each other. We will be creating our own animal and minibeast fact files, writing a diary of our day out to Wingham, writing receipts and taking orders in the zoo cafe roleplay area, creating story maps as well as retelling the stories we share.

Home work and Logins

Home Reading:
Wednesday- Sharing books
Friday- Phonics
Please remember to return both books on a Wednesday to be changed.



Tapestry Online Learning Journals:

<https://tapestryjournal.com/>
Remember to check Tapestry to see what we have been upto as well as letting us see anything you get up to at home.

School trip

Tuesday 23rd April to
Wingham Wildlife Park

It is important to note that in EYFS at Westlands Primary we teach to the children's interest so this plan may change. We offer a play based curriculum where children are encouraged to use the inside and outside learning environment on a daily basis, whatever the weather. We encourage our children to become independent learners in a safe and stimulating environment where staff plan activities around a different theme each term.